

Connect, Collaborate, Succeed

# Impact & Outlook

## Accessibility Resource Center

*In the Division of Student Affairs*



## Mission Statement

Accessibility Resource Center (ARC) recognizes individuals with disabilities as an integral part of a diverse community, and is committed to the provision of comprehensive resources to the University community (faculty, staff, and student) in order to create equitable, inclusive, and practical learning environments. ARC and its staff are dedicated to providing equal access to higher education to the University community.

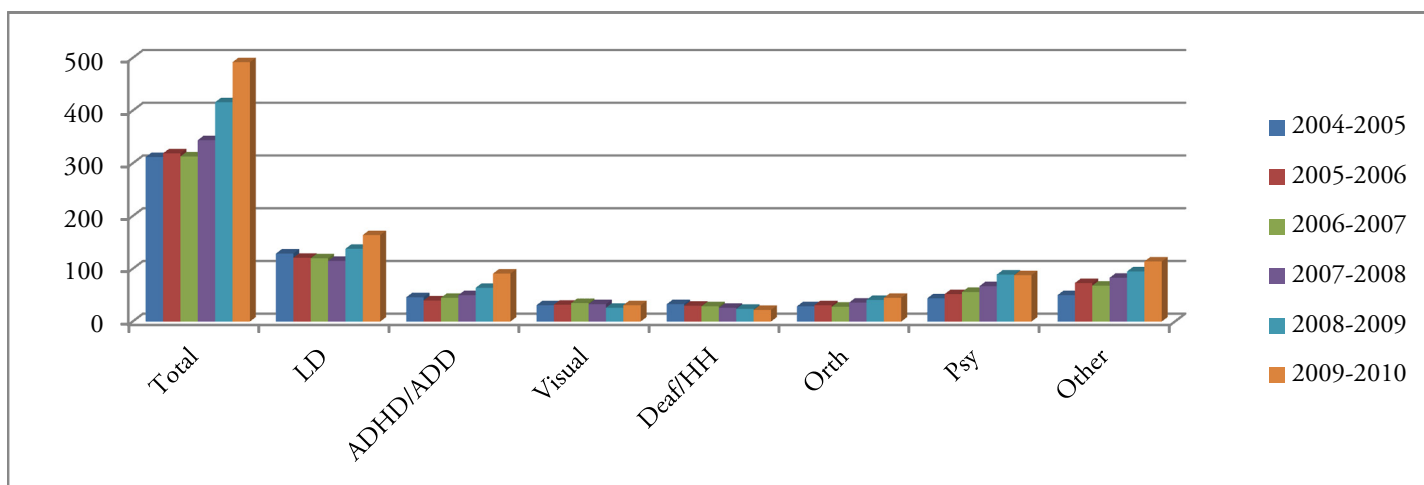
## Departmental Summary

The departmental services data below encapsulates the level of importance of all functions within ARC on student retention and graduation:

- 608 students eligible for services and enrolled 2009-2010
- 492 sought services with 411 using accommodations
- 18% increase from 2008-2009
- 37% increase since 2004-2005
- 95% increase since 2001-2002
- 9 students received 1907 hours of signed language interpreting
- 82 students were eligible to receive 426 hours of classroom related reading
- 187 students received 536.9 hours of classroom note taking, from 352 stipend note takers
- Of the 492 students who received services 412 (84%) were retained to the following year, 19 withdrew from classes prior to the end of the semester
- 16 Student employees assist with text conversion, note taking, on-on-one assistance, and clerical duties

## Disability Types

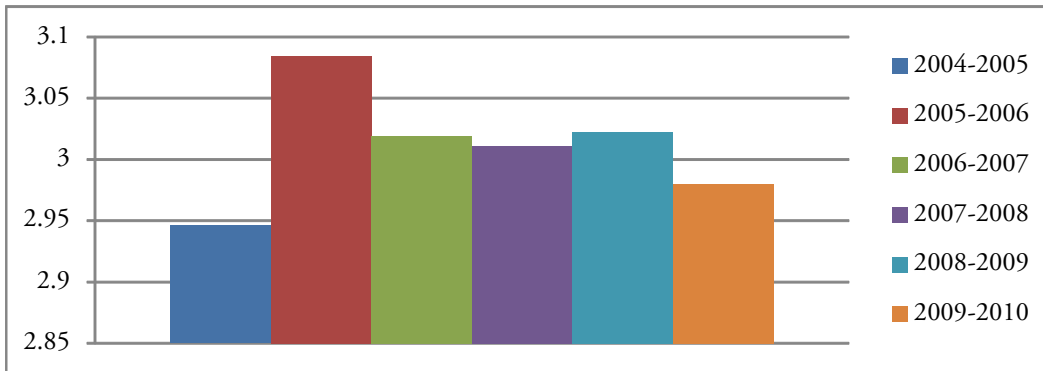
A breakdown of types of disabilities for the same six years shows students with learning disabilities as the largest group served. There has been a 102% increase in students with psychological disabilities and a 128% increase in the type listed as other that includes students with chronic health, Asperger's Syndrome, and High Functioning Autism.



LD=Learning Disability, ADHD= Attention Deficit Hyperactivity Disorder, ADD= Attention Deficit Disorder, Visual= Visual Impairment, Deaf/HH= Deaf and Hard of Hearing, Orth= Orthopedic, Psy=Psychological, Other= High Functioning Autism, Aspergers and chronic health disorders.

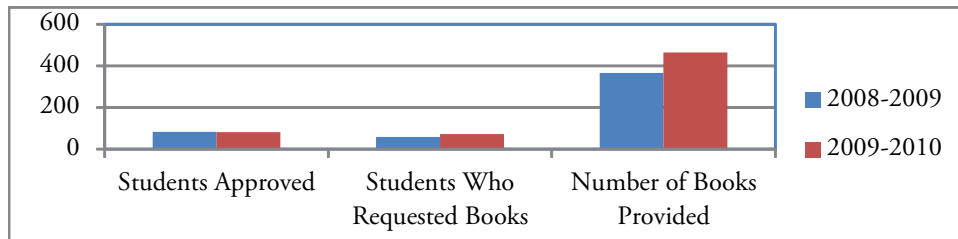
## Academic Success

The overall mean grade point average (GPA) for Fall 2010 was 2.98. The overall mean GPA fell below 3.0 for the first time since 2004-2005.



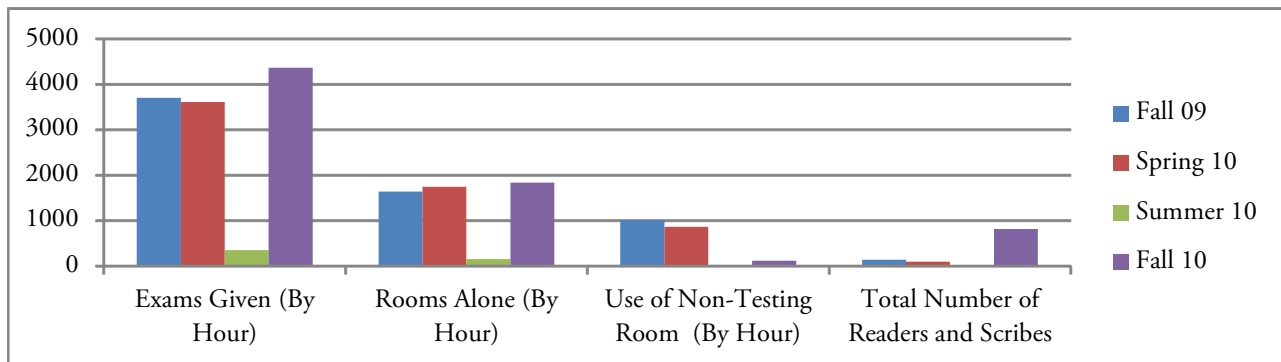
## Service Delivery

Accessible Text Conversation	2008-2009	2009-2010
Students Approved	83	82
Students Who Requested Books	59	72
Number of Books Provided	366	465



## Testing Accommodations 2009-2010

	Fall 09	Spring 10	Summer 10	Fall 10
Exams Given (By Hour)	3699	3613	354	4364
Rooms Alone (By Hour)	1639	1744	157	1835
Use of Non-Testing Room (By Hour)	1012	867	4	122
Total Number of Readers and Scribes	140	97	12	814



### **Delta Alpha Pi**

ARC formed a chapter of Delta Alpha Pi International Honor Society to alleviate negative stereotyping associated with a disability and recognizes the community contribution of students with disabilities. Undergraduate students must have 3.10 GPA or higher and have completed 24 credit hours. Graduate students must have a 3.30 GPA or higher and have completed 18 credit hours. ARC had 135 students who met the criteria for initiation April 29th, 2010.

### **Ticket to Work**

ARC received a contract with Social Security's Employment Network Contracts Team (ENCT) to be a Ticket to Work Employment Network (EN). The Ticket to Work program is a new program from the Social Security Administration for a person who receives Social Security Disability Insurance (SSDI) benefits and Supplemental Security Income (SSI) benefits because of a disability. The Ticket to Work program pays EN's for milestones and outcomes students achieve in moving towards self-supporting employment.

### **ARC Week**

ARC hosted the First Annual ARC Week April, 2009. Events held throughout the week were: ARC Chit Chats, Resume Writing in collaboration with Career Services, Ticket to Work Program in collaboration with Department of Vocational Rehabilitation, Junior/Senior Day for students with disabilities, and the Annual Initiation Ceremony for Delta Alpha Pi.

### **RID Testing Site**

ARC/DHHS has been a testing site for the Registry Interpreters for the Deaf (RID) Certification exam since 2000 and is the only testing site for the performance exam in New Mexico. Sign Language interpreters come in from all over the southwest and even outside the region to test at our site because of our excellent testing facility. ARC/DHHS is committed to supporting RID and its goal to continue as a leader in establishing a national standard of quality for Sign Language interpreters and transliterators.

### **Assistive Tech**

Software for comprehension and cognitive processing: Kurzweil 1000 and 3000, Wynn, Inspiration, TextHelp.

Software for speech to text: Dragon Naturally Speaking.

Software screen readers: JAWS, WindowEyes, ZoomText (also screen magnifier).

Software for Text conversion (eText): OmniPage, Duxbury, InftyReader, Scientific Notebook, Photoshop, Acrobat Pro, Illustrator.

Braille Embossers (prints braille): Juliette and Tiger Embossers, Pictures In A Flash (PIAF) produces tactile graphics.

CCTV systems: page magnifiers.

Computer Labs: Windows 7 and Macintosh computers with assistive software loaded and printing facilities.



*Accessibility Resource Center*